

Quick Reference Card



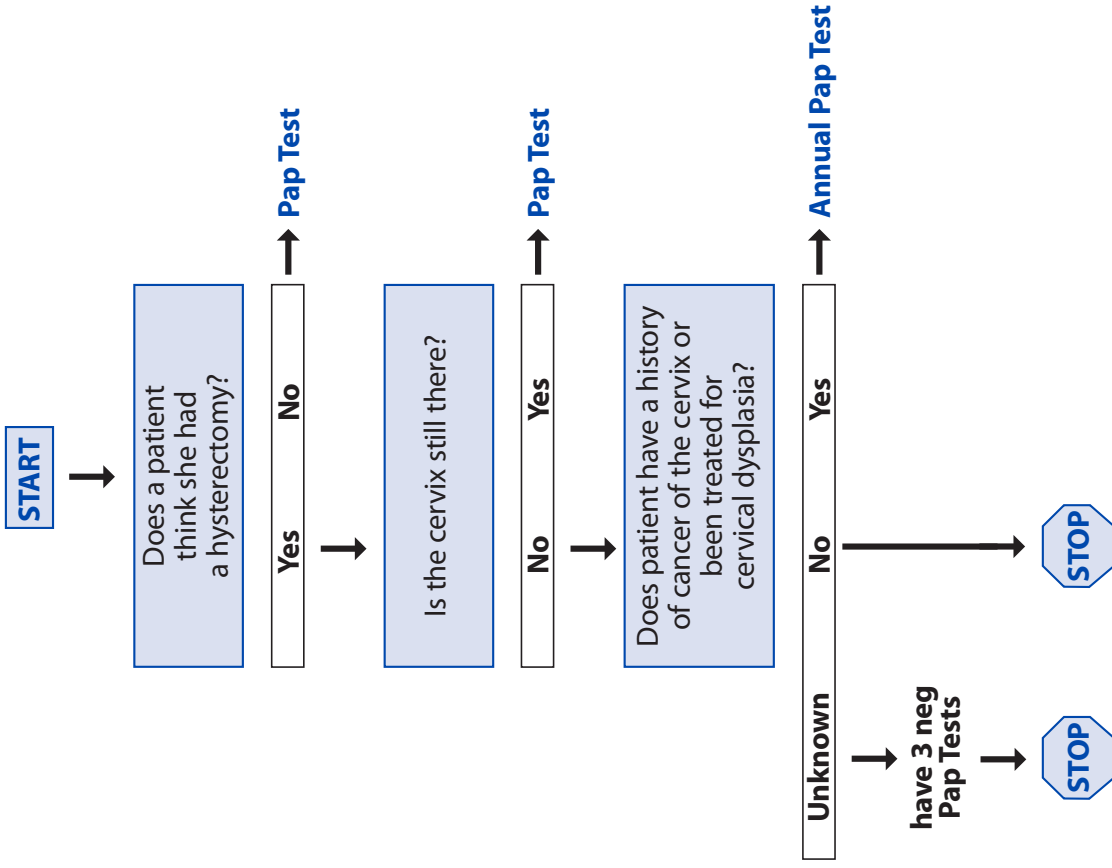
Bethune Bldg, Rm 555A, 1276 South Park St
Halifax, NS B3H 2Y9
Phone: 902.473.7438 • Fax 902.473.4425 •
Email: papforlife@ccns.nshealth.ca

Post hysterectomy screening guidelines

A woman need not be screened (i.e. have a Pap test) if all of the following conditions exist:

- the woman no longer has a cervix (i.e. total hysterectomy), and
- the hysterectomy was performed for a benign condition, and when reviewed pathologically, failed to identify evidence of cervical dysplasia or cancer of the cervix, and
- there is an adequate negative screening history in the previous ten years (i.e. 3 or more negative tests), and
- the woman has not been treated (by LEEP, laser, cryotherapy, cone, hysterectomy) **for cervical dysplasia or has a history of cancer of the cervix.**

FLOW CHART FOR SCREENING A WOMAN WHO HAS HAD A HYSTERECTOMY



Glossary

Total hysterectomy: removal of the uterus and cervix

Sub-total hysterectomy: removal of the uterus only, leaving the cervix in situ

Partial hysterectomy: a layman's term, usually used to connote a hysterectomy (either total or sub-total) with preservation of the ovaries